



*'Passionately sharing our Africa with you!'*

©Peter Cadot  
Photography



*The best and most beautiful things in the world cannot be seen nor even touched, but just felt in the heart.*  
Anne Sullivan

A 15 DAY 'TAMU' SAFARI  
WITH  
PETER OR TORSTEN CADOT



### **Our 'Tamu' (sweet/tasty) Safari begins....**

Come with us on a journey!

Peter or Torsten Cadot your professional Safari guides will share the deepest secrets and untamed parts of the African wilderness. They will offer you a local's insight and a unique opportunity to view some of the wildest corners of East Africa.

The following is one of our '**many sample itineraries**'. (There are many different destination options available and our aim is to assist you in choosing your most memorable safari adventure!)

We aim to show you how far we can go, and how much we can do, in a 15-day safari, with specially selected lodges in our favourite parts of East Africa.

We are a family and our safaris are designed exclusively for you and include visits to the finest private game sanctuaries and National Parks. With vast plains filled with wildlife, and vistas so immense and clear, you will free your soul from the modern world.

### **OUR SUGGESTED ITINERARY AT A GLANCE :-**

DAY – 1 - NAIROBI – HOUSE OF WAINE – LEAFY SUBURBS OF LANGATA

DAY – 2, 3 & 4 – SASAAB - SAMBURU

DAY – 5, 6 & 7 - OL MALO - LAIKIPIA

DAY – 8, 9 & 10 – SOLIO LODGE – SOLIO CONSERVANCY - ABERDARES

DAY – 11, 12, 13, & 14 - KICHECHE MARA CAMP - MAASAI MARA

DAY– 15 – DEPART ON AFTERNOON SCHEDULE FLIGHT FOR NAIROBI, WILSON-TRANSFER TO JOMO KENYATTA INTERNATIONAL AIRPORT FOR YOUR EVENING FLIGHT HOME.

Accommodation is only booked provisionally and cannot be confirmed until payment of a deposit.

All guests should take out comprehensive insurance cover when paying their confirmation deposit, to cover them for cancellation for any reason, curtailment, medical expenses, personal baggage, emergency evacuation back home and money.

Flights costs are subject to change until payment in full. Flight times may be subject to change at short notice. We will always do everything in our power to minimize any disruption.

Each passenger shall be entitled to no more than, 1 soft-sided suitcase weighing no more than 15 kgs (33Lbs) and a maximum size of 66 centimeters in length.

### **HOUSE OF WAINE – LANGATA SUBURBS**

**Inclusions:** Airport transfers, Bed & Breakfast accommodation

**Rates Exclude:** Dinner on first night, all drinks, house wines, soft drinks, mineral water, local beers, house spirits, laundry, Champagne, luxury spirits, selected wines, health insurance and other items of personal nature.

### **SASAAB – SAMBURU**

**Inclusions:** Airstrip transfers, game drives, camel walks, guided walks, horse riding, Samburu cultural visits, all meals, house wines, house soft drinks, house beers, house spirits, laundry, bush breakfasts and sundowners

**Exclusions:** Champagne, luxury spirits, selected wines, helicopter scenic flight, health insurance, massage treatments and personal effects

### **OL MALO LODGE**

**Inclusions:** Airstrip transfers, game drives, camel walks, guided walks, horse riding, Samburu cultural visits, all meals, house wines, house soft drinks, house beers, house spirits, laundry, bush breakfasts and sundowners, private charter flight from Sasaab to Ol Malo and a 3 hour scenic helicopter flight.

**Exclusions:** Champagne, luxury spirits, selected wines, health insurance, massage treatments and personal effects

SOLIO LODGE - ABERDARES

**Inclusions:** Full board accommodation including picnics; house wines, house soft drinks, house beers, private charter flight from Ol Malo to Solio Lodge, house spirits, game-viewing drives, escorted bush walks, horse riding, bush breakfasts, a day excursion to the Aberdare National Park, all conservancy fees.

**Exclusions:** Laundry, champagne, luxury spirits, selected wines, health insurance, scenic helicopter ride, massage treatments, health insurance and personal effects.

KICHECHE MARA CAMP - MAASAI MARA

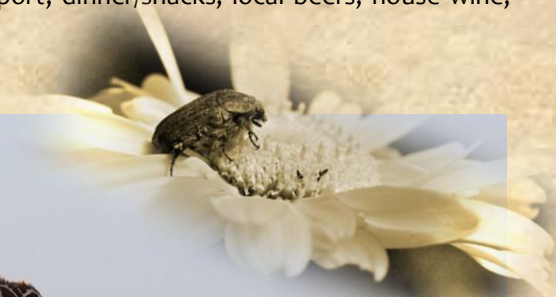
**Inclusions:** Airstrip transfers, unlimited use of exclusive use of vehicle & game-viewing drives and other camp activities, all meals, conservation fees, house wines, house soft drinks, house beers, house spirits, laundry, bush breakfasts and sundowners

**Exclusions:** Mara National Reserve park fees, Champagne, luxury spirits, selected wines, balloon rides, personal effects and any other activities not stipulated in the itinerary.

DAY OF DEPARTURE

**Inclusions:** Airport transfers to Jomo Kenyatta International Airport, dinner/snacks, local beers, house wine, local spirits, soft drinks & mineral water.

**Exclusions:** Airport taxes, other snacks, drinks, etc.





## DAY 1 - HOUSE OF WAINE – IN THE LEAFY SUBURBS OF LANGATA

You will be met at Jomo Kenyatta International Airport by your professional safari guide, Peter or Torsten Cadot when you arrive in Nairobi, and transferred to the House of Waine, a beautiful 'Homestay' nestled in the leafy suburbs of Langata, on the outskirts of Nairobi, for your overnight stay. For your first night, dinner and drinks are for your account.





## DAY 2, 3 & 4 - SASAAB – SAMBURU (NORTHERN KENYA)

After an early breakfast we catch our schedule flight north to Samburu, thereafter a short game drive to Sasaab arriving in time for lunch.

Sasaab is located within the Westgate Community Conservancy in Samburu in the northern part of Kenya. Majestically situated on the high banks of the Ewaso Nyiro River (Kenya's third largest watercourse), Sasaab commands breathtaking views across the arid landscape of the Northern Frontier District towards the jagged peak of Mt Kenya, and offers a truly exceptional safari experience in an area renowned for its variant species.

© Peter Cadot



Sasaab's design is based on strong Swahili/Moroccan principles, in which African heat is a central consideration. The rooms are spacious, allowing for enormous open air bathrooms and huge comfortable beds. Couple with this is expansive views from the Ewaso Ng'iro River, which flows below the lodge, where elephants regularly come down and drink from the cooling waters and the scene beyond is truly breathtaking. There is also a cooling plunge pool on your deck, to relax in and take in this beautiful scene; it is the perfect formula to truly unwind.

We spend three days exploring the area, searching for all the great game – elephant, lion, leopard and rarer species such as the Grevy Zebra, long necked gerenuk, reticulated giraffe, oryx, greater kudu, as well as the spectacular birdlife abundant in this area. Perhaps, if time prevails, an insight to the Samburu people and their customs.







We shall also have an opportunity to spend a full morning/day in the Samburu National Reserve, armed with a picnic cook-out breakfast. This delightful park is littered with wildlife and beautiful scenes and when we have had enough we shall return to Sasaab for a late lunch.

In this beautiful part of the wilderness, we have a chance to escape the confines of our vehicle and traipse through this magnificent arid wilderness on foot, or perhaps a camel ride and as the sun begins to set, we can perch on a huge sundowner-rock formation, with your favorite cocktails in hand, the vistas are so immense and clear that they free your soul from the modern world, which leaves you with everlasting impressions that this part of Africa is exclusively for you!

















©Peter Cadot

An integral part of our Safari is the rich culture of the Samburu people and we will have the chance to integrate with these wonderful pastoralists and learn about their diverse and rich culture.

It will be an experience never to be forgotten as their customs are truly inspiring!

Every guest who stays at Sasaab, a percentage is contributed towards helping the local community, providing the local Schools with educational books, new desks, and art supplies, learning materials, as well as supporting clean water-bore holes, medical facilities to assist in the health care of many individuals and many more important projects to support these wonderful people.



© Peter Cadot





## DAY 5, 6 & 7 - OL MALO LODGE & HOUSE

After a leisurely breakfast, we board our private charter flight, for a short scenic flight south west to Ol Malo Lodge, arriving late morning.



©Peter Cadot  
Photography







Situated on the northern edge of the Laikipia plateau, Ol Malo is nestled into a rugged escarpment looking out across the time-honored lands of Kenya's Northern Frontier District. These miles of dense thorn bush are favoured by the shy, elusive antelope from which the lodge takes its name, "the place of the Greater Kudu". An ancient land inhabited by wildlife and peoples of a time long ago, undisturbed and living by the rhythm of nature and as part of this untamed and beautiful landscape is Ol Malo.

Ol Malo is a striking building in an outstanding location built with natural local materials, sculpted into a warm and hospitable lodge set among the curves of a rocky hillside surveying one of the great views of the world.

Comfortable and accommodating sitting and dining rooms provide shady terraces for protection from the hot African sun – and open fireplaces for the cooler evenings. Smooth lawns and carefully tended shrubberies sweep down to a cliff edge, providing a vantage point to observe wildlife activity at the watering hole and salt lick below.

There are four rock and olive wood cottages; masterfully put together using local rock, old knarled olive wood and views sweep across the rugged terrain to Mount Kenya.

Each double room has its own veranda and complete privacy. Large picture windows frame a wild, constantly changing landscape.

An infinity pool is charming and a delightful area to relax and soak up this beautiful landscape.

Built, owned and managed by Colin and Rocky Francombe, their son Andrew and his wife Chyulu and with the help of the Samburu





people, Ol Malo has established a reputation in the world of eco-tourism that far exceeds its modest size and is a result of the Francombe family's commitment to personal service and attention to detail. For just a handful of guests at a time, Ol Malo offers the perfect mix of comfort, luxury and life in harmony with nature.

There are a number of activities to keep you busy, as and when you want or as relaxed as you would like it to be!

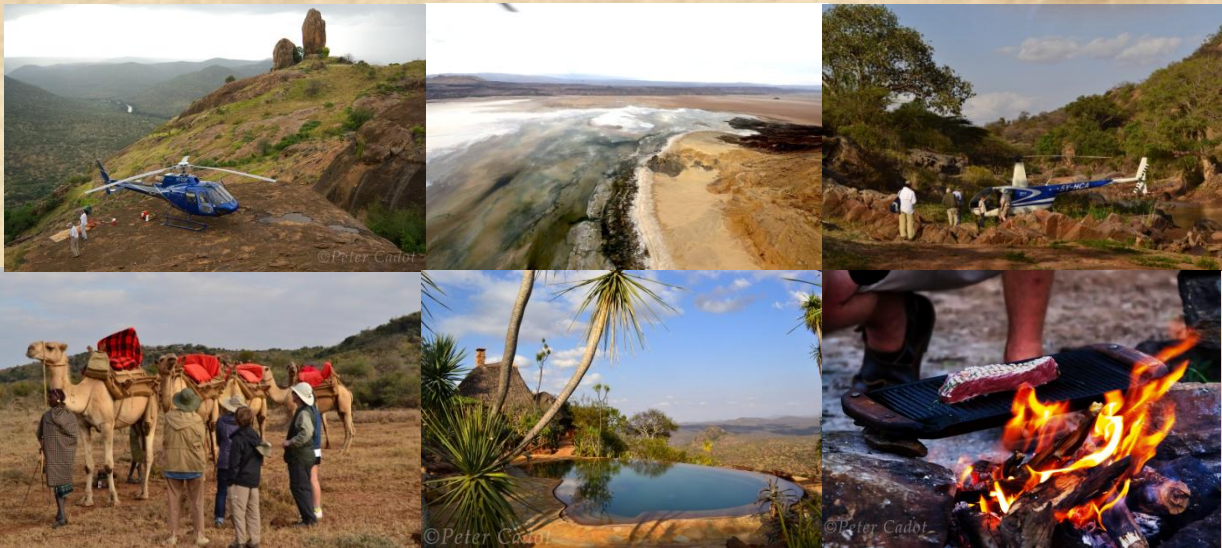
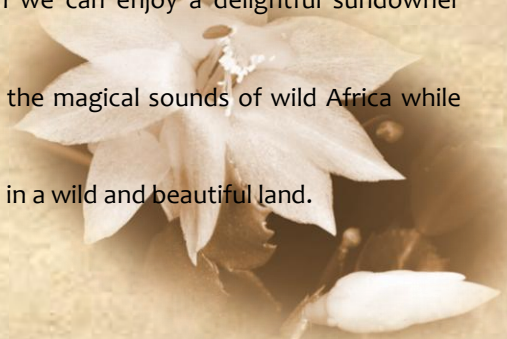
A 3 hour helicopter ride will be one of our day's adventures, to horse riding, camel rides, walking, delightful sundowners, picnic by the river, the choice is yours.

Wake up to the golden sunrise, framing the snow-capped peaks of Mt. Kenya. A game drive or gentle walk through this gorgeous wilderness ending with a surprise bush breakfast set under a might thorn tree.

Visit the colorful Samburu nomads and get to know their ancient traditions, be part of their song and dance which leaves an everlasting impression, finally with the setting sun we can enjoy a delightful sundowner returning to the lodge when we have had our fill.

Indulge yourself in the peace and comfort of Ol Malo and tune into the magical sounds of wild Africa while dining under the glittering stars.

To stay at Ol Malo is to abandon oneself and live by another drumbeat in a wild and beautiful land.





**DAY 8, 9 & 10 - SOLIO LODGE – SOLIO CONSERVANCY - ABERDARE MOUNTAINS**  
After a leisurely breakfast we shall board our private charter flight and head towards Aberdare Mountains and the plains below, to Solio Lodge, arriving late morning and a very warm welcome from our hosts.



©Peter Cadot







We shall have three days to explore this wonderful 45, 000 acre private ranch/Reserve, either on foot, mountain bike, horseback or vehicle, ending our days with delightful sundowners on the open plains or other hidden secret spots.

Solio is nestled in the valley between the dramatic slopes of Mount Kenya and the rolling peaks of the Aberdare Mountains. The Lodge is located on the Solio Reserve, which is part of a private ranch, and is home to a diverse and numerous population of wildlife, including both black and white rhino.



The lodge has just six cozy and luxurious rooms, each en suite with large glass pane windows to take in the panoramic views of the landscape, which is framed by Mount Kenya. Each room has a private lounge area warmed by a corner fire, as well as large bathrooms with double sink, bath and shower. The rooms are designed for warmth as Solio is a high in altitude destination and can be cold at night.



A delightful option, after an early breakfast, is to explore the Aberdare forests, a short drive to the Aberdare National Park, we drive through the Aberdare Salient and climb through the huge indigenous bamboo forest, gnarled pencil cedar trees, dripping with 'old man's beard' to 13,000 feet and explore the moorlands, visiting the Karura falls which cascades over 1,500ft in three separate falls! We shall drive through the thick forests, with sightings of Colobus monkeys, giant forest hog, forest elephant, cape buffalo, hyena, to glorious birdlife. We shall of course carry a delicious picnic lunch, with fresh home grown salad ingredients from the small Solio vegetable garden, returning late afternoon for cocktails and dinner.





### **Day 11, 12, 13 & 14 - Kicheche Mara Camp - Maasai Mara**

After an early breakfast we bid farewell to the lodge crew and transferred by road to Nanyuki to board our schedule flight and fly south west to the world famous Maasai Mara reserve, here big game is the order of the day. On the sweeping river-fed plains, the whole of wild Africa congregates, from Elephant and Buffalo to the prowling cats and huge herds of plains game, our home for the next four days. Our days will be filled with a veritable wildlife feast.



The camp is set up in the heart of the Mara North Conservancy, in a picturesque valley, surrounded by indigenous trees and bush, commanding beautiful views across the valley and beyond to the Maasai Mara Reserve.



Although Mara North conservancy borders the Maasai Mara reserve, there really is no reason to go any further, as wildlife is plentiful and a large pride of lion has made their home, here in the conservancy, as well as a plethora of many other species.

Breakfast or lunch will be eaten in the bush, when and where we want it.





The wildlife is abundant and the gentle rolling grasslands ensure that animals are never out of sight. Birds, too, are prolific. Including migrants, well over 450 species have been recorded, among them, 57 species of birds of prey. The climate is gentle, rarely too hot and well-spread rainfall year round. The Mara North Conservancy borders the Maasai Mara National Reserve (1672 square km) which lies about 270 kilometers from Nairobi and the conservancy have exclusive use of about 67,900 acres of un-spoilt wilderness.

The first sight of this natural wonderland is breathtaking. Throughout the year the Maasai



Mara is a place of natural drama, a kaleidoscope of colour and life. Thomson's and Grant's gazelle, Topi and Eland and many more species of plains' game offer a rich choice of food for the dominant predators; lion, leopard and cheetah which hunt in this pristine wilderness. Here the great herds of shuffling elephants browse among the rich tree-studded grasslands.





In the Mara River, Hippo and Crocodile are commonly found. But for all this richness of fauna, the profusion of winged beauty and the untouched fragility of the landscape are all subordinate to the Mara's foremost attraction, the mighty march of the wildebeest. Culminating in the most spectacular annual migration in the world, with over a million and a half wildebeest and zebra making the crossings over the grand Mara River from Tanzania into Kenya, this spectacle offers one of the most fabulous opportunities in our time. Although July, August and September are the months when the Maasai Mara plains are filled with migrating wildebeest and zebra, there is a huge amount of resident wildlife year round. Apart from the better-known species there are numerous opportunities to add some of the rare and less frequently seen animals to the visitor's checklist. Bat-eared foxes peer from their burrows and there are thousands of Topi, an antelope not found in other major parks save Tsavo National Park. The combination of a gentle climate, scenic splendor and untold numbers of wildlife makes the Maasai Mara Kenya's most popular inland destination park.



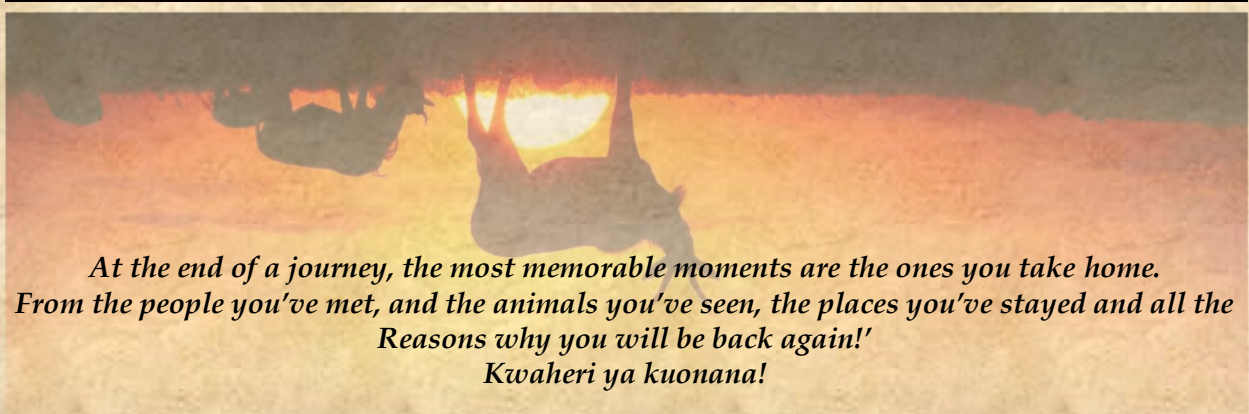


**DAY 15 - DEPARTURE:**

We shall enjoy a last early morning game drive, then after lunch, we can freshen up and catch our afternoon schedule flight to Nairobi Wilson, and then transferred to the International Airport and your onward flight home.

**End of services.**

©Peter Cadot  
Photography



*At the end of a journey, the most memorable moments are the ones you take home.  
From the people you've met, and the animals you've seen, the places you've stayed and all the  
Reasons why you will be back again!  
Kwaheri ya kuonana!*

*'A once in a lifetime experience'*





## YOUR OLIVE TREK SAFARI GUIDES:-

### *PETER CADOT*



**Pete** has spent 36 years of his marriage, to Alison, sharing East Africa's wilderness treasures with Chala & Torsten, their children and visitors from all over the world.

Peter's paternal Grandfather (French) relinquished his French ancestry, for an English wife and a life in England. Their only son Dennis came to Kenya in 1944, with the Royal Artillery ("Gunners," as he would proudly say) and later became a respected member of the Advertising fraternity both in Kenya and South Africa.

His maternal Grandfather (Scottish) was transferred from the Rhodesian Rangers, seconded to the British Army in Kenya, then joining the KAR, (King's African Rifles) around 1915. Arriving as a Sergeant thereafter quickly promoted to Captain. His unit was instrumental in fighting an epic battle for Saliata Hill, close to the border of Tanzania which the Germans held onto convincingly. After the First World War, he claimed his 'Soldier/ settler' Farm, on the foothills of Mount Kenya and Aberdare Mountain. Diana, Peters' mother, lived and grew up at Ngobit Farm, Nyeri.

Pete always carries two things on safari: his unrivalled natural knowledge and a bounty of bush skills born from three generations in the Kenyan wilderness.

Since completing his education in England, Peter has dedicated his life and passion to the safari industry, running game lodges, camps and camping adventures around East Africa. He is renowned for his deep knowledge of the local flora and fauna, his close relations with the Samburu and Maasai communities, his warm humour, and his legendary campfire wit. But beware: not all tales he tells are as tall as they may seem!

### *TORSTEN CADOT*



©Peter Cadot

Torsten, born and raised in the vast Kenyan wilderness developed a passion and deep love for "everything bush" from a young age. His insatiable curiosity and enthusiasm to further his knowledge and insight into the African wilderness is infectious. He loves sharing this knowledge and adventurous spirit with many a guest! His deep respect and close friendship with many indigenous tribes in Kenya adds a wonderful cultural twist to each safari.

In 2012 Torsten left Kenya to pursue a career in the British military, and to satiate a zeal for international travel, and adventure.

Returning after a 9-year absence, with a host of professional accolades, and an accumulation of stories of travel, exploration, adventure and guarding the British royal family, he has settled in the leafy suburbs of Nairobi, to pursue his lifelong dream of leading adventure and photographic safaris and guiding alongside his father - Peter.

Like his Father, his subtle humour, and cheeky wit, will have you believing in many a fireside narrative!



SAFARI COST PER PERSON (**Quotation available on request** - as costs are individually quoted for - depending on - how many days you wish to be on safari, year/month, number in party, specific additions, alterations, requests, etc. to your safari itinerary.)

**Price per Person in USD**

**Validity:-** 1/1/2022/ - 31/09/2022

**Total per person**

**Total Per person**

**Each of :-**

2 persons

\$ (per person)

**TERMS & CONDITIONS - BOOKING & PAYMENT TERMS**

The costs shown/quoted above are for the year **2022**, and are subject to change and we reserve the right to review these rates in the event of un-foreseen circumstances, currency exchange rate in fluctuations, cost increases, tax increases, or other events beyond our control.

Specifically, flight costs are subject to change with fuel surcharges.

For any changes in itinerary by guests whilst on Safari, there will be no refund for any services not utilized, and all new arrangements will be for the guests account.

Your booking request has to be made in writing and a 50% deposit is required. The balance has to be remitted at least 60 days prior to safari commencement.

Further packing, travel and any other pertinent suggestions and details required for this Safari will be forwarded to you at a later date.

**CANCELLATION POLICY:**

Reservations that are cancelled, reduced in length of stay or reduced in numbers are subject to Cancellation and No Show fees and in the event of any changes in numbers of your Safari:

More than 120 days prior to Safari booking, the deposit is returned net of Bank charges

Between 120 days and 46 days, 20% of the full value is forfeited

Between 45 days and 31 days, 50% of the full value if forfeited

Less than 30 days (and no shows) 95% is forfeited

If the number of participants in your party changes after your Safari has been booked and confirmed, additional surcharges may apply.

**NOTE: Schedule/charter flights and transfer rates are subject to change without warning and we reserve the right to change quotes accordingly.**

**Concession/conservation fees (In case of any new fees introduced by national parks and reserves without our knowledge, we reserve the right to change quotes accordingly)**

**QUOTATION INCLUDES:**

Full board accommodation as stipulated in the itinerary.

Bed & breakfast - accommodation at House of Waine – Nairobi (**Excludes:** Dinner/snacks/drinks – these are for your account.)

Transportation - unlimited use of exclusive use of vehicle for your game drives in chauffeur driven 4x4

Services of Professional guide.

Internal (Kenya only) schedule flights... Wilson - Samburu/Sasaab, Nanyuki/Solio Lodge - Maasai Mara – Maasai Mara - Wilson Airport – Nairobi

Private Charter flights from Sasaab/Samburu to Ol Malo – Ol Malo to Solio Lodge

3 or 6 hour Helicopter flight with picnic breakfast

Parks entrance fees and conservation fees as indicated in the itinerary.

All Government taxes and levies

All Laundry (Except House of Waine – Nairobi)

All meet, greet and transfer services as stipulated in the itinerary.

All meals as indicated in the itinerary.

Drinks - local beers, house wines, local spirits, soft drinks + mineral water as indicated in the Itinerary

Dinner/snacks on last evening – drinks, local beers, wine, local spirits and mineral water



**Flying doctors medical evacuation** - this covers you within East Africa for a period of your stay in Kenya. In the eventuality of a medical emergency, you will be airlifted to Nairobi where you will be taken to a good hospital. Hospital bills are born by the patient.

**QUOTATION EXCLUDES:**

All guests should take out comprehensive insurance cover when paying their confirmation deposit, to cover them for cancellation, curtailment, medical expenses, personal baggage, emergency evacuation back home and money;  
International air transportation to and from the destination;  
Personal travel and health insurance (highly recommended);  
International medical evacuation cover (highly recommended);  
Airport departure taxes;  
Visas (\$50 Kenya - per passport holder) are available on line - <http://evisa.go.ke/evisa.html>  
Dinner/snacks, drinks, laundry, etc. at **House of Waine**, Nairobi  
Optional excursions while on Safari;  
Curio shop purchases;  
Any services not indicated in the itinerary;  
Specific exclusions at lodges and camps as specified;  
All items of personal nature e.g. telephone call bills, email bills etc.  
Any other item(s) not included in our itinerary.  
Specific exclusions at lodges and camps as specified above;  
Tips and gratuities for your Professional Safari Guide, hotel, lodge staff, camp staff

**Laibility:** All bookings are accepted on the specific condition that (The Olive Tree Holdings Ltd) Olive Trek Safaris, acts only as the reservations office for the Safari itinerary, and assumes no liability whatsoever for any injury, damage, loss, accident or delay to person or property.

**Force Majeure**

Olive Trek Safaris (The Olive Tree Holdings Ltd) shall not be liable for any claims, losses, damages, costs, expenses, delays or loss of enjoyment, of any nature or kind whatsoever, resulting from events beyond our or a supplier's reasonable control, including but not limited to acts of God, strikes, lockouts or other labor disputes or disruptions, wars, blockades, insurrections, riots, earthquakes, weather conditions, floods or acts or restraints imposed by government authorities.



***Peter or Torsten Cadot***

Directors/Professional Safari Guides

P O Box 15259

00509

LANGATA, KENYA

Peter Cell : (+254)(0) 704 154 249

Alison Cell: (+254)(0) 731 606 839

Email: [theolivetreehold@gmail.com](mailto:theolivetreehold@gmail.com)

Facebook page: [Olive Trek Safaris](#)